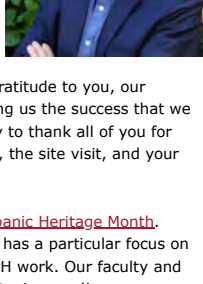




**Director's Message**

We are proud to share with you that on June 9, 2023, the SDSU School of Public Health was reaccredited by the [Council on Education for Public Health \(CEPH\)](#) for another 7 years (through 2030). The School was initially accredited in 1982 and, with your critical assistance and guidance, has remained accredited since.



CEPH accreditation is the hallmark of a quality public health education, and we owe a debt of gratitude to you, our stakeholders and community partners, for making us the success that we are today. We would like to take this opportunity to thank all of you for your contributions to the CEPH self-study report, the site visit, and your continued support.

In this issue of the newsletter, we celebrate [Hispanic Heritage Month](#). Serving as a Hispanic-Serving Institution, SDSU has a particular focus on Latinx populations and this is reflected in our SPH work. Our faculty and student projects are profiled below for an enlightening read!

In addition, we note that institutionally, SDSU has opened the [Latinx Resource Center](#) and created a [Hispanic Serving Educator Faculty Learning Community](#). Our parent organization, [ASPPH](#), is also celebrating and we encourage readers to participate in [ASPPH's Celebrate Diversity campaign](#) to contribute your story as well as to see highlights from the public health community that discuss how individual backgrounds and heritages have shaped careers in public health.

If you are no longer at SDSU, please continue to stay in touch with us! For updates on the SPH and our events, please check our website and online calendar, our LinkedIn Alumni pages, and make sure you update your information in our alumni database: <https://publichealth.sdsu.edu/gspH-alumni/alumni-update-form/>

To a great transition into a cooler season.

"Life starts all over again when it gets crisp in the fall." -F. Scott Fitzgerald

*Eyal Oren, Ph.D., MS*  
Director, SDSU School of Public Health

**LATINE HERITAGE MONTH**



**Latinx/e Heritage Month: Know Your Past to Transform Our Future – Siempre Pa'Alente y Nuca Pa'tras**

Associate Professor in Health Management and Policy, Melody Schiaffino, is profiled in this article celebrating Hispanic Heritage Month.

**School News**

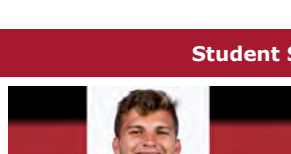
**Toxic microplastics found where the rubber meets the road**

SPH alumna and Research Specialist in the [Hoh Environmental Health Laboratory](#). Margaret Stack was recently featured in this article from [KPBS!](#)



**California Tobacco Researchers Recommend Policy Changes to Defend Against Thirdhand Smoke**

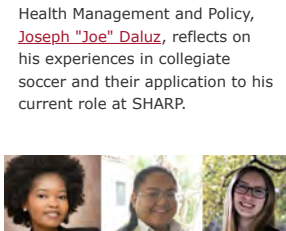
A study led by researchers from SDSU and other institutions finds gaps in smoke-free policies and proposes solutions to protect the public.



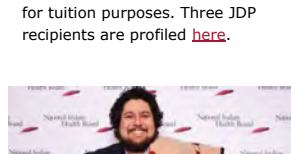
**Faculty Spotlight**

**ECHO Researcher Yu Ni Joins SDSU SPH Epidemiology & Biostatistics Division**

We are excited to welcome environmental epidemiologist, Dr. Yu Ni, to SPH faculty as an assistant professor in the Division of Epidemiology & Biostatistics this semester!



**Student Spotlight**

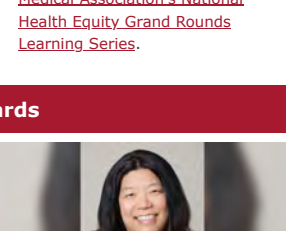


**The Power of Teamwork: Former student-athlete Joe Daluz brings lessons from soccer into health management**

Master of Public Health student in Health Management and Policy, [Joseph "Joe" Daluz](#), reflects on his experiences in collegiate soccer and their application to his current role at SHARP.

**JDP Students Awarded Presidential Graduate Research Fellowship**

[The Presidential Graduate Research Fellowship \(PGRF\)](#) is an award for students who display outstanding potential for achievement but are not yet considered California residents for tuition purposes. Three JDP recipients are profiled [here](#).



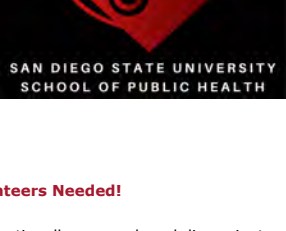
**Breaking Down the Ivory Tower: Building the Health Care Workforce America Needs**

MD/PhD student in the SDSU-UCSD Joint Doctoral Program [Alec Calac](#) spoke at this featured event for the [American Medical Association's National Health Equity Grand Rounds Learning Series](#).

**Awards**

**Congratulations, Dr. Hoh!**

[Dr. Eunha Hoh](#) was recently appointed to the federal [Ocean Research Advisory Panel \(ORAP\)](#) as one of its 18 members.



**Congratulations, summer awardees!**

**SDSU/UCSD Cancer Partnership Scholars Program**

Leanne Locano

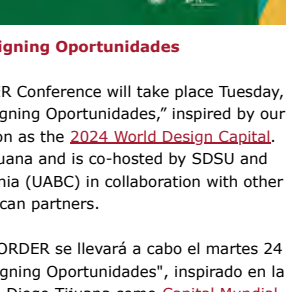
**2023 SURP Recipients**

Sara Laila  
Raegan Lunceford  
Andrea Meza  
Elora Shakoor

**Podcast**

**Dr. Nadav Davidovitch (Rerun)**

In this episode, we will take a look at an international perspective on the COVID-19 pandemic with Israel's [Dr. Nadav Davidovitch](#). Dr. Davidovitch is an expert in health policy research and epidemiology. During the pandemic, he has served on the national cabinet for the COVID-19 response in Israel. We talk about how the pandemic exposed the country's health inequities and Israel's rapid response to COVID-19.



This episode was recorded in 2022.

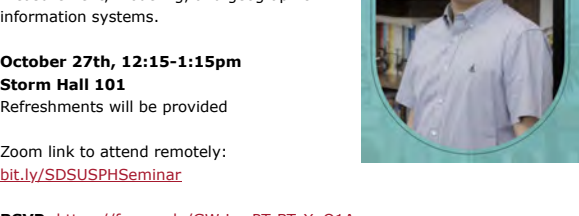
**Fall 2023 Volunteers Needed!**

Help shape public health locally and nationally, research and disseminate information, meet interesting guests, and more.

Familiarity with A/V production helpful but not necessary!

Please contact James Romine at [jkromine@sdsu.edu](mailto:jkromine@sdsu.edu) to apply.

**Events**



**RE:BORDER 2023 Designing Oportunidades**

The fifth annual Bi-national RE:BORDER Conference will take place Tuesday, October 24. This year's theme is "Designing Oportunidades," inspired by our San Diego-Tijuana region's designation as the [2024 World Design Capital](#).

The conference will take place in Tijuana and is co-hosted by SDSU and Universidad Autónoma de Baja California (UABC) in collaboration with other U.S. and Mexican partners.

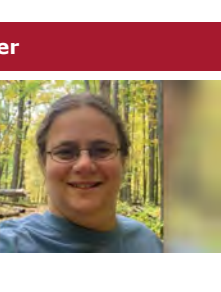
La quinta conferencia binacional RE:BORDER se llevará a cabo el martes 24 de octubre. Este año, el tema es "Designing Oportunidades", el martes 24 de octubre. Este año, el tema es "Designing Oportunidades", inspirado por la designación de nuestra región de San Diego-Tijuana como [Capital Mundial del Diseño 2024](#). Se realizará en Tijuana y será coorganizada por SDSU y la Universidad Autónoma de Baja California (UABC), en colaboración con otros socios estadounidenses y mexicanos.

**Early Registration is Now Open!**

**SDSU School of Public Health Faculty Research Speaker Series**

**Dr. Sung-Deuk Choi**

Dr. Choi is a visiting professor at SDSU. His research focuses on the determination of priority monitoring areas for hazardous air pollutants in industrial cities based on measurement, modeling, and geographic information systems.



**October 27th, 12:15-1:15pm**  
**Storm Hall 101**  
Refreshments will be provided

Zoom link to attend remotely:  
[bit.ly/SDSUSPHSeminar](https://bit.ly/SDSUSPHSeminar)

**RSVP:** <https://forms.gle/GWrLeuPTsBTyXuQ1A>

**Study Abroad!**



**View our two newest PH 550 opportunities!**

**Vietnam**  
**2-12 January 2024**

Contact [Gary Rotto](#) at [grotto@sdsu.edu](mailto:grotto@sdsu.edu) for more information!

Learn from faculty at Hue University about cultural and political structures that shape the Vietnamese Public Health system. Take a water tour to learn about marine environmental health at Ha Long Bay. Visit mountainous communities to learn about their health challenges and solutions. Experience a cooking class in Tra Que Vegetable Village with discussion of local nutrition and health promotion.

**Mexico**  
**Spring Break 2024**

Contact [Elizabeth Reed](#) at [ereed@sdsu.edu](mailto:ereed@sdsu.edu) for more information!

Explore the historical and contemporary topics involving health care and health promotion with emphasis on Mexico and the border region. A 9-day trip to Tijuana is required and includes accommodation, transportation, site visits with a tour guide, cultural activities, and lectures by experts in the field; other areas may include Tecate, Rosarito, and Ensenada.

**Register Here!**

**Reading Corner**

**Sexually concordant and dimorphic transcriptional responses to maternal trichloroethylene and/or N-acetyl cysteine exposure in Wistar rat placental tissue**



Environmental Health Assistant Professor [Dr. Elana Elkin](#) recently published a toxicology study using a rodent model to investigate novel pathways for how the industrial solvent trichloroethylene may cause placental damage during pregnancy.

**Click here to tell us about your recent publications!**



**DONATE TO THE SDSU SCHOOL OF PUBLIC HEALTH**

For SDSU SPH updates and our events, please check our website and our online calendar, our Alumni LinkedIn Pages, and make sure you update your information in our [alumni database](#).

Thoughts or suggestions? Contact us with any stories you would like to share!

**CONTACT US**

