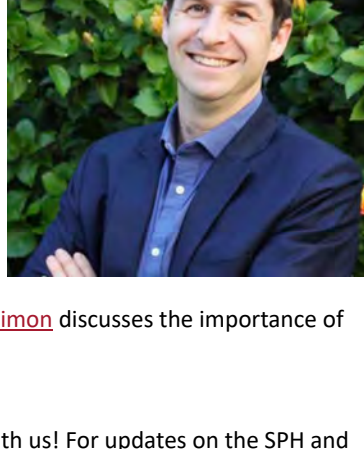


Director's Message

Dear Friends,

Happy Halloween!

This month, we are excited about the recruitment launch for our new [Doctor of Public Health \(DrPH\) degree](#), designed to train leaders and executive managers to assume leadership roles in public health. We highlight [Filipinx American History Month](#) and we spotlight our student and faculty research in a number of areas and feature [a faculty recipient of the NIH Aim Ahead Fellowship](#). In a new edition of our podcast, [Dr. Richard Simon](#) discusses the importance of good sleep hygiene and better sleep practices.



If you are no longer at SDSU, please continue to stay in touch with us! For updates on the SPH and our events, please check our website and online calendar, our LinkedIn Alumni pages, and make sure you update your information in our alumni database: <https://publichealth.sdsu.edu/gsph-alumni/alumni-update-form/>.

Eyal Oren, Ph.D., MS
Interim Director, SDSU School of Public Health

FILIPINX AMERICAN HISTORY MONTH

A tradition of nursing excellence in the Filipino Community

As an [Asian American Native American Pacific Islander-Serving Institution \(AANAPISI\)](#), this is a particularly important time for us to recognize and celebrate the experiences, challenges, and successes of the Filipinx American community.

School News



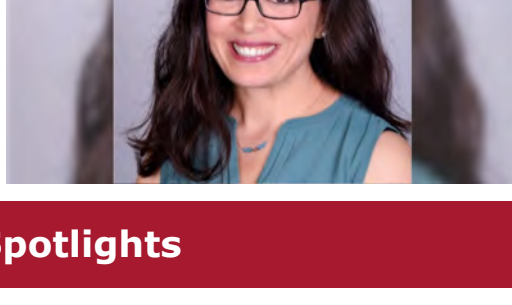
Gov. Signs Bill, OKs CSU, SDSU to Offer Independent Doctoral Degrees

With the signing of Assembly Bill 656, work is already underway at SDSU to launch new, independent doctoral degree programs. This includes the new [Doctor of Public Health \(DrPH\) program](#).

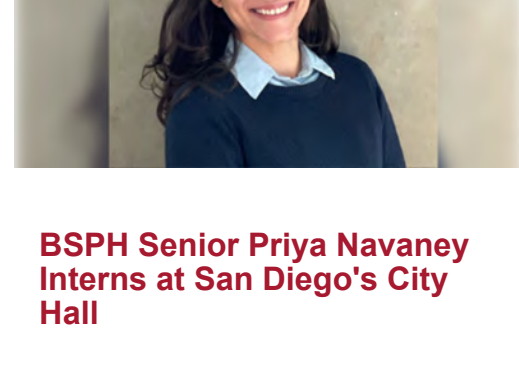
Faculty Spotlight

Aim-Ahead Fellow Devrim Kaya Joins SDSU IV Environmental Health Faculty

We are excited to welcome environmental engineer [Dr. Devrim Kaya](#) to SPH faculty as an assistant professor!



Student Spotlights

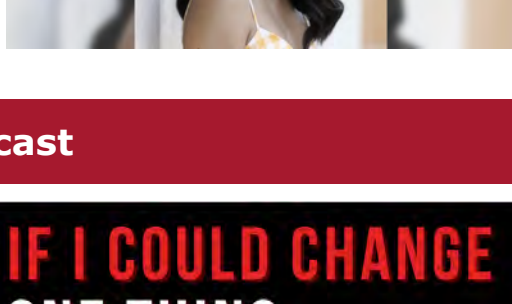


JDP Student Adrienne Lee Awarded NIA Funding for Dementia Research

Fifth-year doctoral student Adrienne Lee was awarded the National Institute of Aging's two-phase award Transition to Aging Research for Predoctoral Students.

BSPH Senior Priya Navaney Interns at San Diego's City Hall

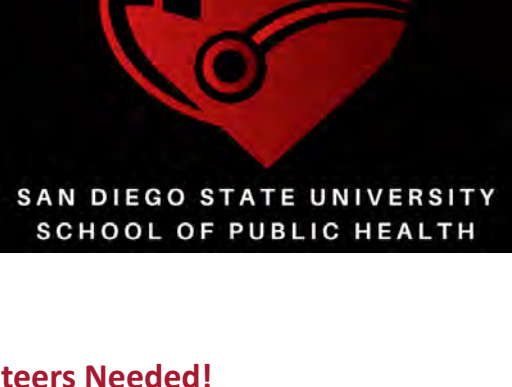
Fourth-year undergraduate student Priya Navaney explores the nuances of public health through policy through her internship.



Podcast

Dr. Richard Simon, MD Sleep Medicine Specialist

Sleep deprivation affects performance in all aspects of life, including academics; operating cars, airplanes, and trains; in medical settings; in the workplace; and in athletics to name a few. How exactly does sleep deprivation affect our mental, emotional, and physical health? What is good sleep hygiene and how can we practice it in our own lives? What policy changes should be made on a societal level to promote proper sleep? In this episode, we discuss these sleep-related issues and more.



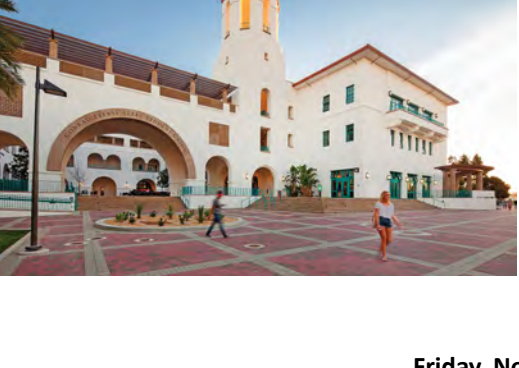
Fall 2023 Volunteers Needed!

Help shape public health locally and nationally, research and disseminate information, meet interesting guests, and more. Familiarity with A/V production helpful but not necessary!

Please contact James Romine at jkromine@sdsu.edu to apply.

Events

SDSU School of Public Health Graduate Student Council presents



Cultural Competency Workshop

This workshop will equip graduate students to navigate the complexities of public health work, work effectively with diverse populations, and become influential leaders in the field. Guest speakers will share inclusive leadership practices.

**Friday, November 3
11 a.m. - 2 p.m.**

**SDSU Campus Union 3
Legacy Suite, Room 372**

Light refreshments will be provided

Funding provided by the [Student Success Fee](#)

SDSU School of Public Health Faculty Research Speaker Series

Dr. Yu Ni Assistant Professor

Dr. Yu Ni has a strong commitment in her research to quantifying the impacts of air pollution exposures on varied maternal and child health outcomes and studying the interplay and totality of endocrine-disrupting chemicals on child development. She will discuss the adverse association between air pollution exposures and child neurodevelopment, exemplified by two studies based on data from a multi-cohort consortium.

Friday, November 17th, 12:15-1:15 p.m.

Storm Hall 101 and Zoom

(bit.ly/SDSUSPHSeminar)

Refreshments will be provided

RSVP: <https://forms.gle/GWrlEuPTsBTyXuQ1A>



APHA 2023

Sunday - Wednesday, November 12-15

Atlanta, GA

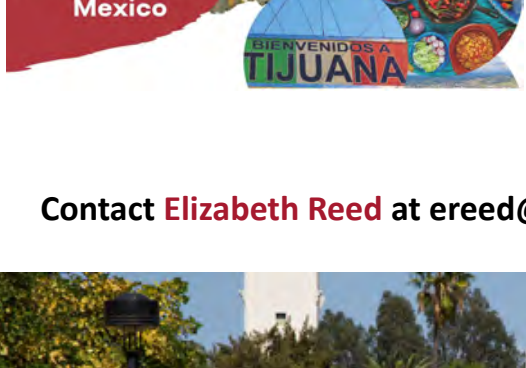
Are you attending the American Public Health Association's Annual Meeting & Expo?

Please fill out [this form](#) so we can promote your work!

We will also have an exhibitor booth (# 1132)!

Let us know!

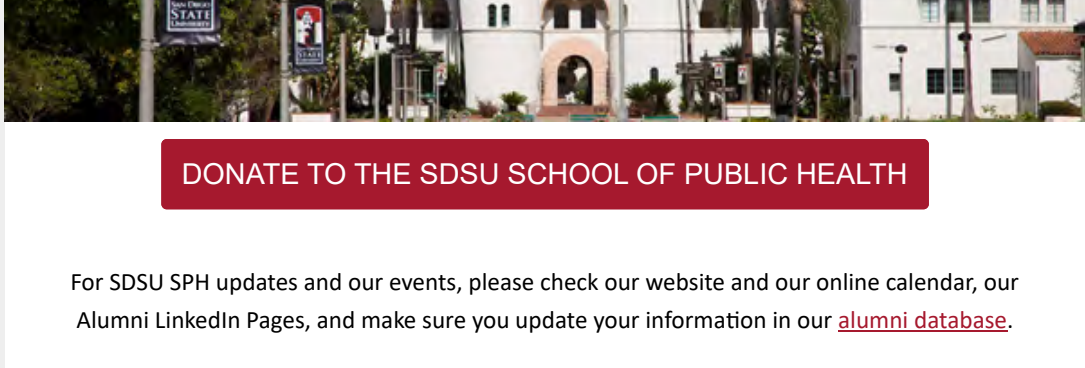
Student Opportunities



Spring Break 2024

Explore the historical and contemporary topics involving health care and health promotion with emphasis on Mexico and the border region. A 9-day trip to Tijuana is required and includes accommodation, transportation, site visits with a tour guide, cultural activities, and lectures by experts in the field; other areas may include Tecate, Rosarito, and Ensenada.

Contact **Elizabeth Reed** at ereed@sdsu.edu for more information!



DONATE TO THE SDSU SCHOOL OF PUBLIC HEALTH

For SDSU SPH updates and our events, please check our website and our online calendar, our Alumni LinkedIn Pages, and make sure you update your information in our [alumni database](#).

Thoughts or suggestions? Contact us with any stories you would like to share!

CONTACT US

